

EPDM INSTALLATION REFERENCE GUIDE

DETAILING GUIDE

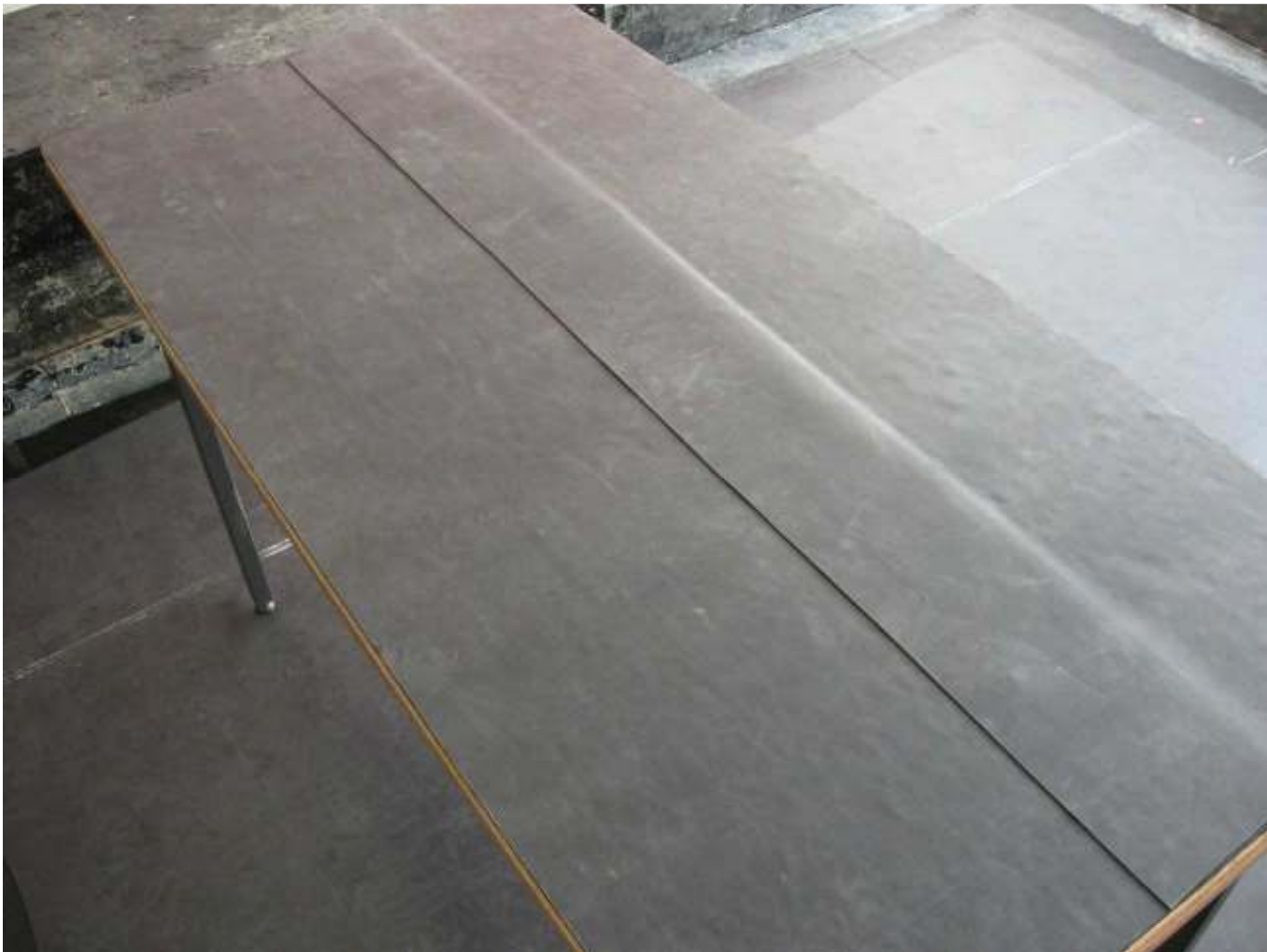
SEAM DETAIL

Seam tape join

If the roof is too large to permit the membrane to be installed in one piece, or is in an “L” shape or similar, then it may be advisable to carry out a seam tape join.

As shown below, the seam tape join should be applied as follows:-

Ensure the leading edge overlaps the lower sheet by at least 100mm, and has a straight edge along the entire length of the seam.



Position and mark the sheet with a white crayon. The line should be 18mm from the leading edge of the overlap, all the way down the seam. An 18mm timber batten is a useful tool for this.



Flap the leading edge away from the line. It may be necessary to keep it secured with various items so it will not flap back onto your working area. Apply **Quickprime Plus** with a scrubber pad and handle, working it into the surface of the membrane, from the marked line and at least 100mm wide. Apply primer to the overlapping membrane also. Apply all the way down the seam. Avoid puddles of primer by spreading it out evenly.





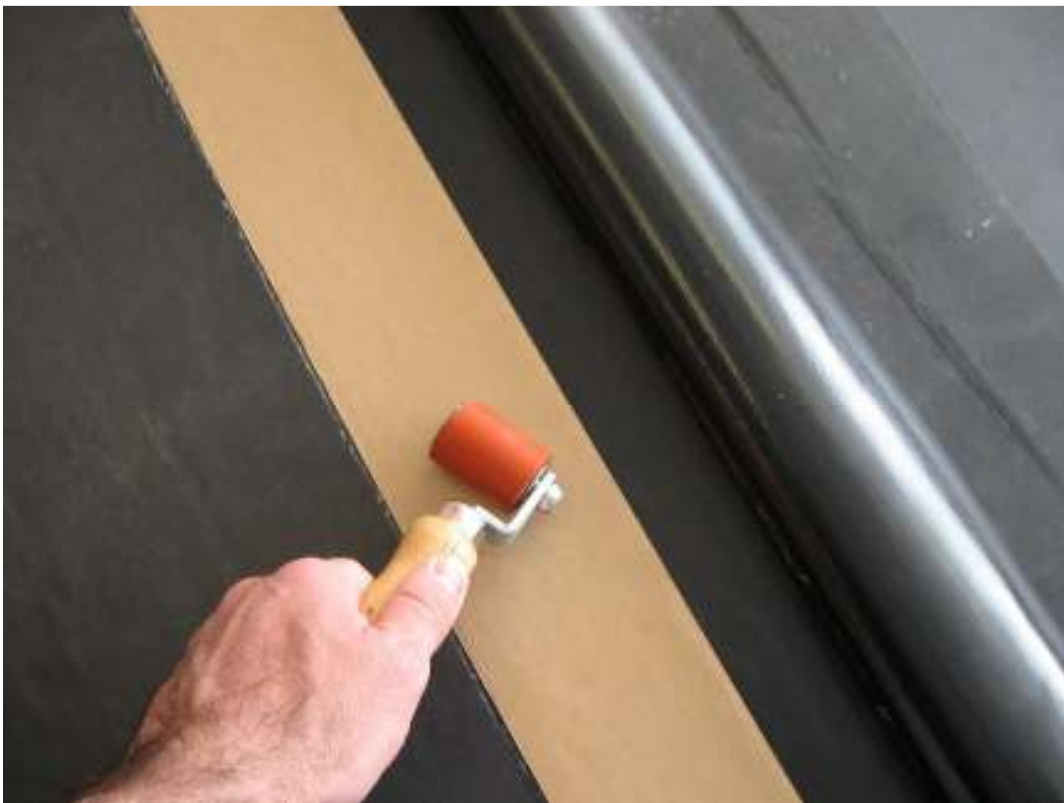
Wait for the **Quickprime plus** to go completely dry. This is especially important, as the seam tape will not adhere to the primer if it is in a wet state. Use the “pushed finger” test, and if the finger moves through the primer or is stringy in any way, it is not ready.



Once the primer is dry, apply the seam tape to the primed area. Lay the edge of the roll of tape parallel to the marked line, keeping the tape taut to prevent air bubbles being caught underneath it. When applied, if the tape veers off at an angle, cut it, peel the backing paper and overlap the tape by at least 50mm. Continue to lay the tape. This ensures you stick to the marked line. This also applies if you run out of tape, and have to start a new roll.



Use the roller to ensure the tape has adhered properly to the membrane.



Flap the leading edge back, and check the distance to the brown paper edge of the tape. This should be around 18mm. Trim the top leading edge if necessary.



Lift up the leading edge, and starting from one end of the seam, peel the backing paper towards you, and let the primed leading edge fall onto the tape, flattening do wn with your hand whilst peeling.



Using a hand roller, roll the entire seam thus eliminating any air pockets.



The finished seam.