

# EPDM INSTALLATION REFERENCE GUIDE

## DETAILING GUIDE

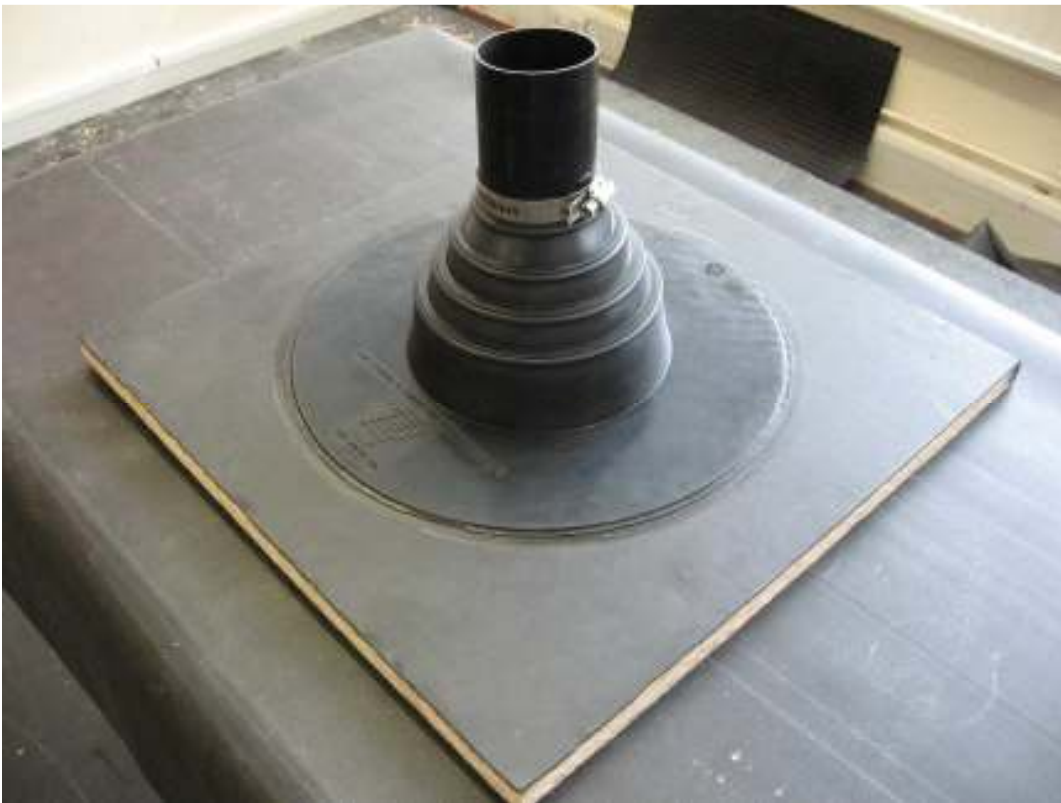
### ***PIPE FLASHING***

Aquaroom  
[www.rubberepdm.co.uk](http://www.rubberepdm.co.uk)

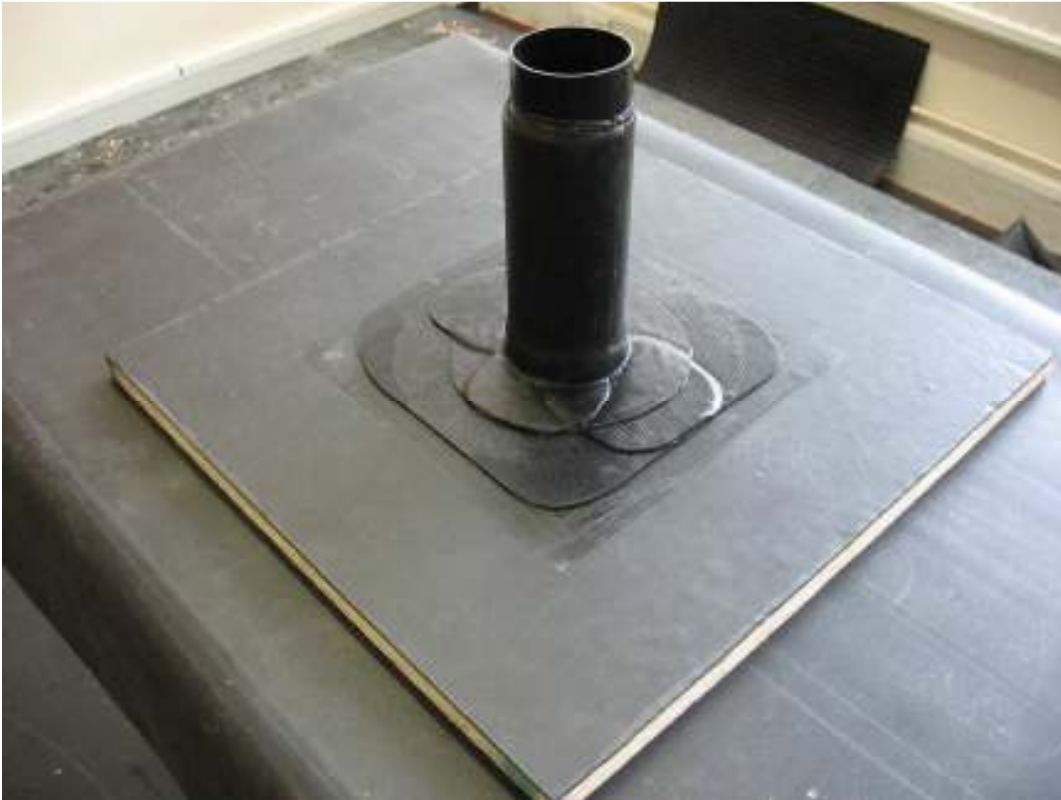
## Pipe flashing detail

There are generally 2 ways of waterproofing a pipe penetration on the roof. One is the **boot** which is straightforward if there is clear access to get it over the pipe,

**prefabricated pipe**



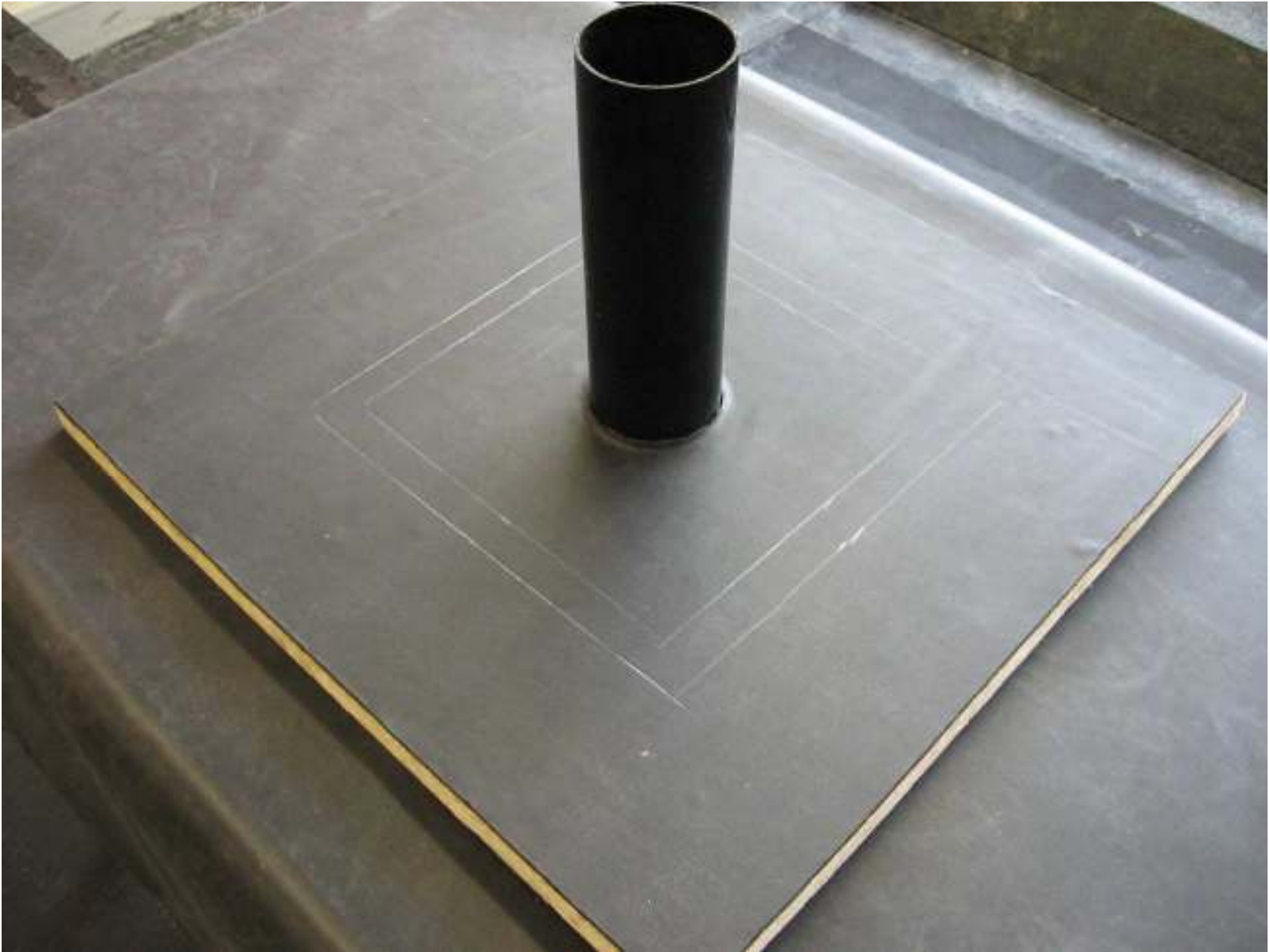
The other is using **quickseal formflash**.



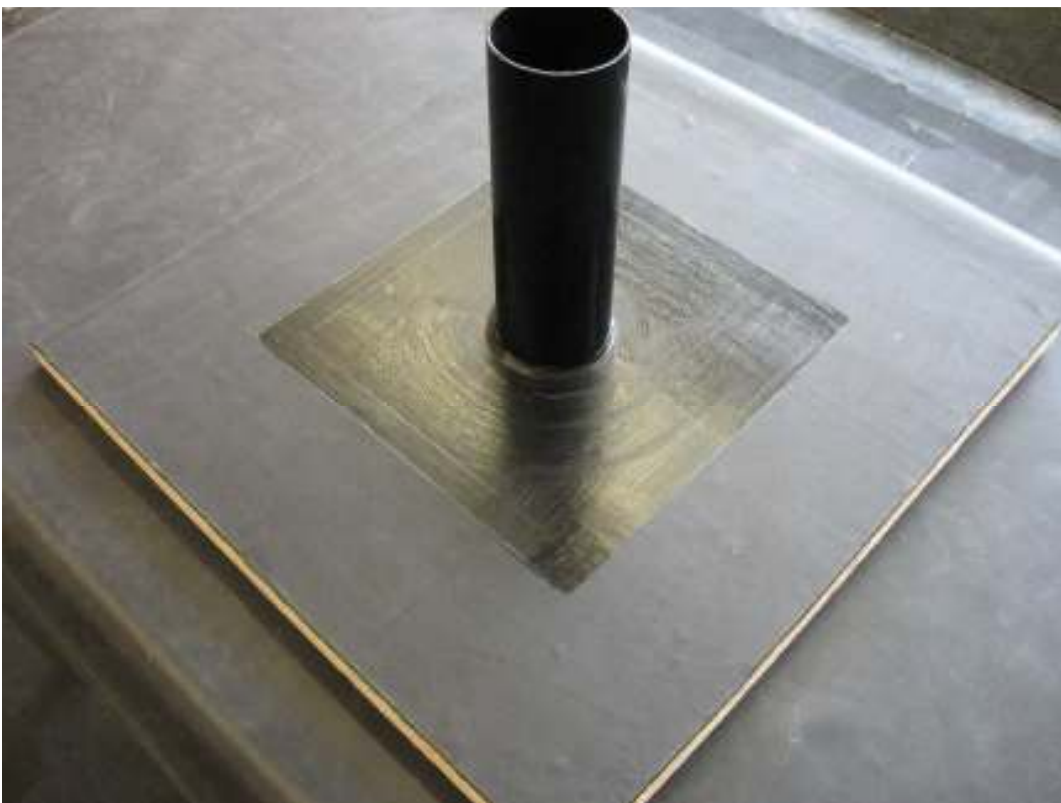
As with any detail, make sure the area is clean and dry.

It doesn't matter what diameter of pipe you are waterproofing as the procedure is the same. There are 3 pieces of formflash needed to complete this detail, two of which are the same size for the base area, and one to wrap around the pipe.

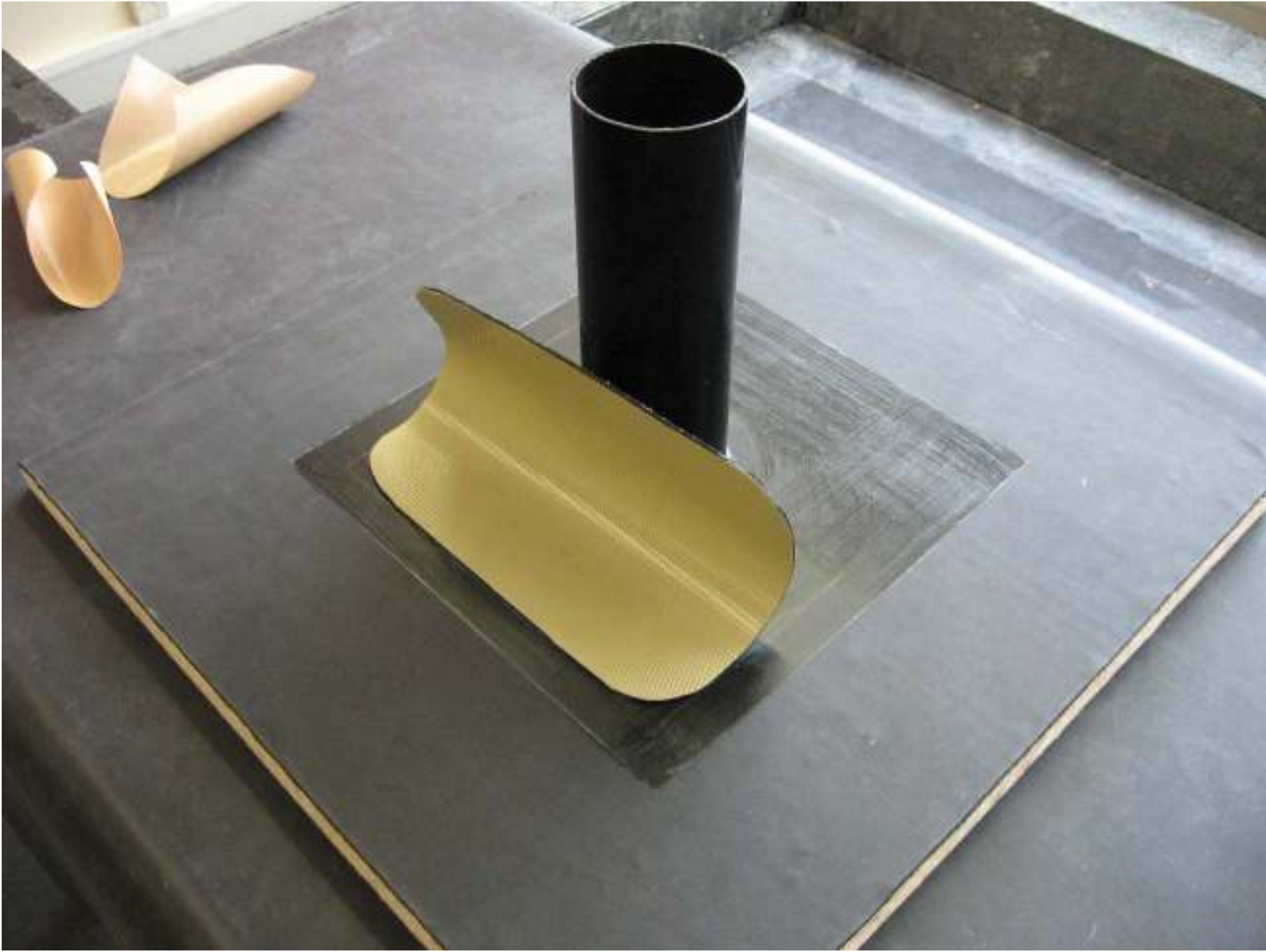
With the crayon, mark out the area to be primed at least 95mm from the pipe. Also mark out 75mm distances as a guideline for applying the formflash.



Prime the 95mm area around the pipe, and also part way up, and wait until dry.



Round the corners off the formflash, and mate onto the deck in line with the 75 mm markings.



On the reverse of the tape, mark and cut out a bell shape as shown below, 25mm smaller than the dimensions of the pipe. This will create a small upstand on the pipe.



Peel the yellow backing plastic away from the tape...



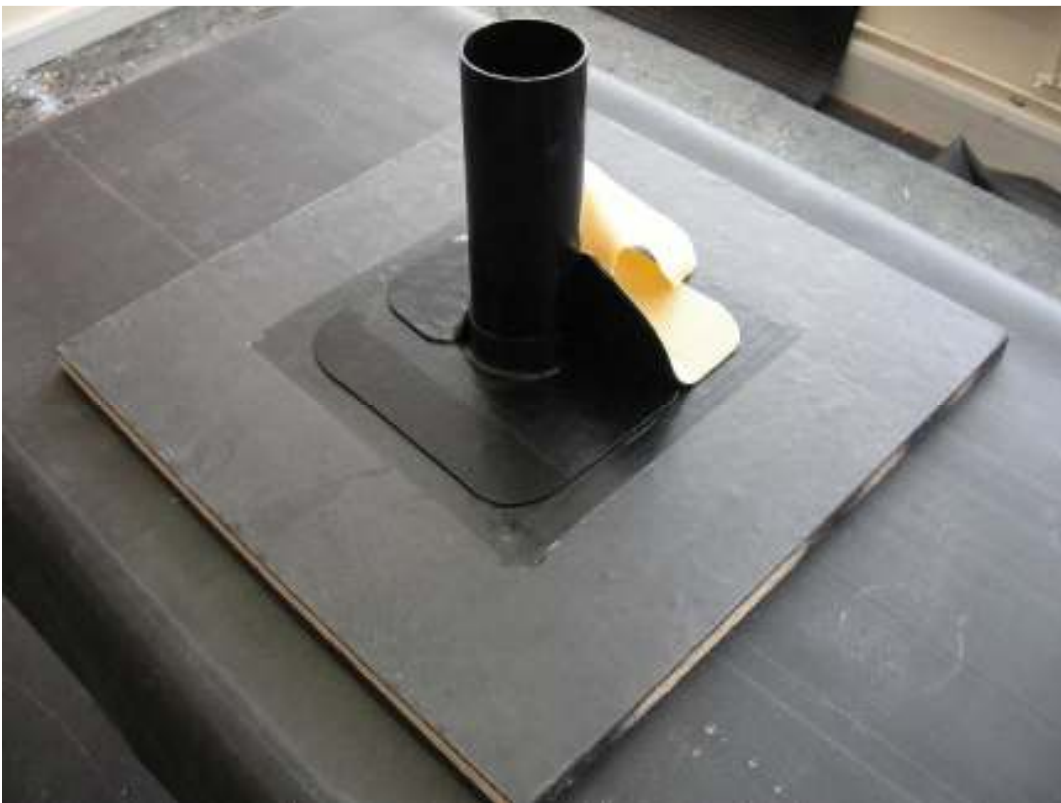
...and lay the formflash around the pipe, keeping the edges in line with the 75mm markings.

Use a roller to ensure the formflash has adhered fully, and the penny roller or blunt end of the scissors to remove any air gaps around the base of the pipe.



Repeat the procedure for the opposite side, but don't forget to prime the area where the 2<sup>nd</sup> formflash piece is to be applied.

When laying, keep the edges in line with the first piece of formflash.

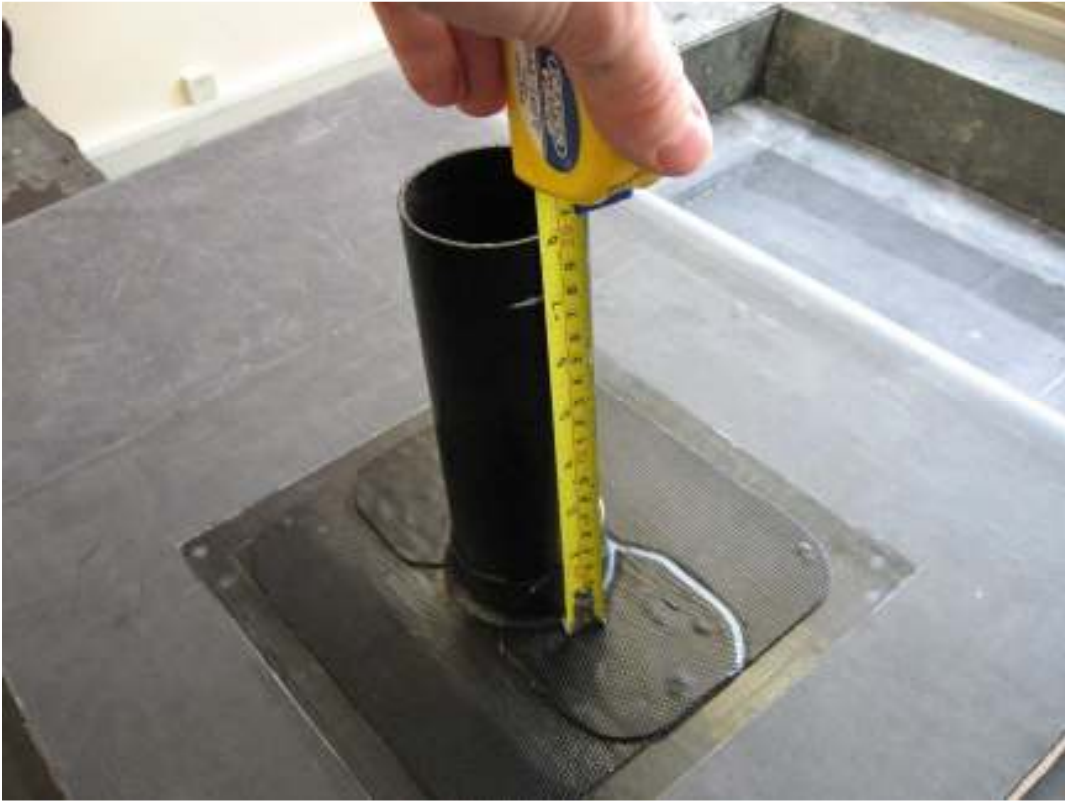


Finish with the roller.



The final piece of formflash wraps around the pipe, and is then laid onto the deck by at least 50mm.

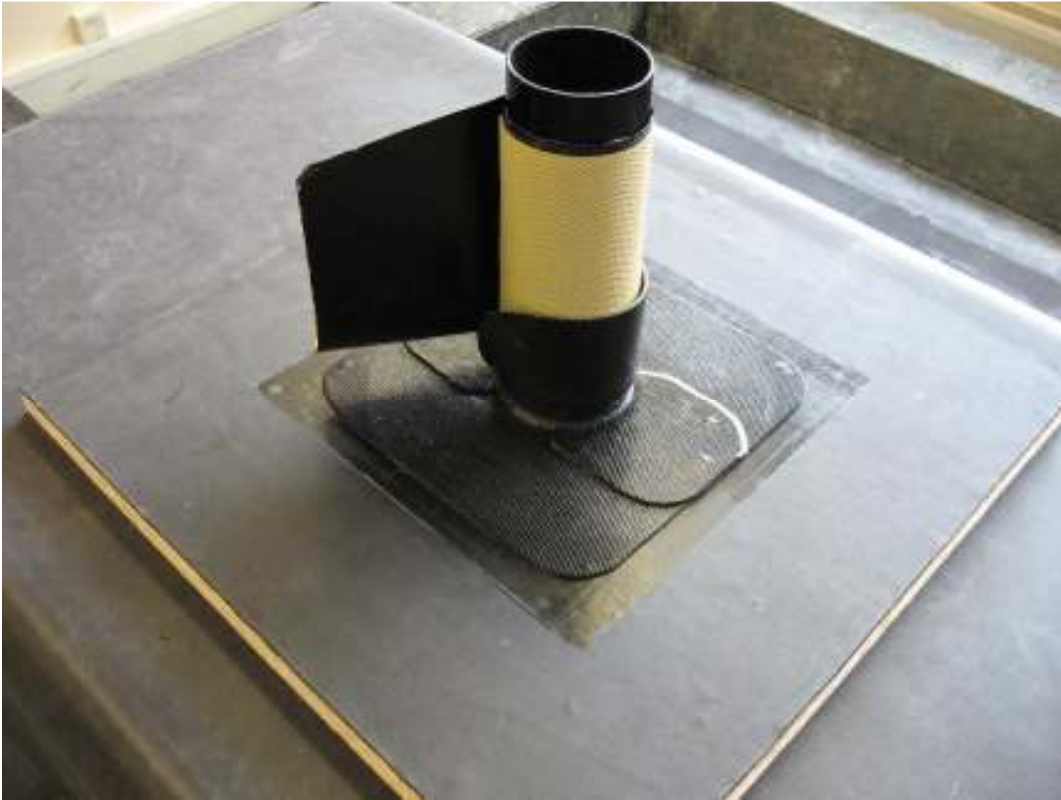
As with the external corner, mark a line where the top of the formflash is to be applied, allowing for minimum 50mm onto the deck.



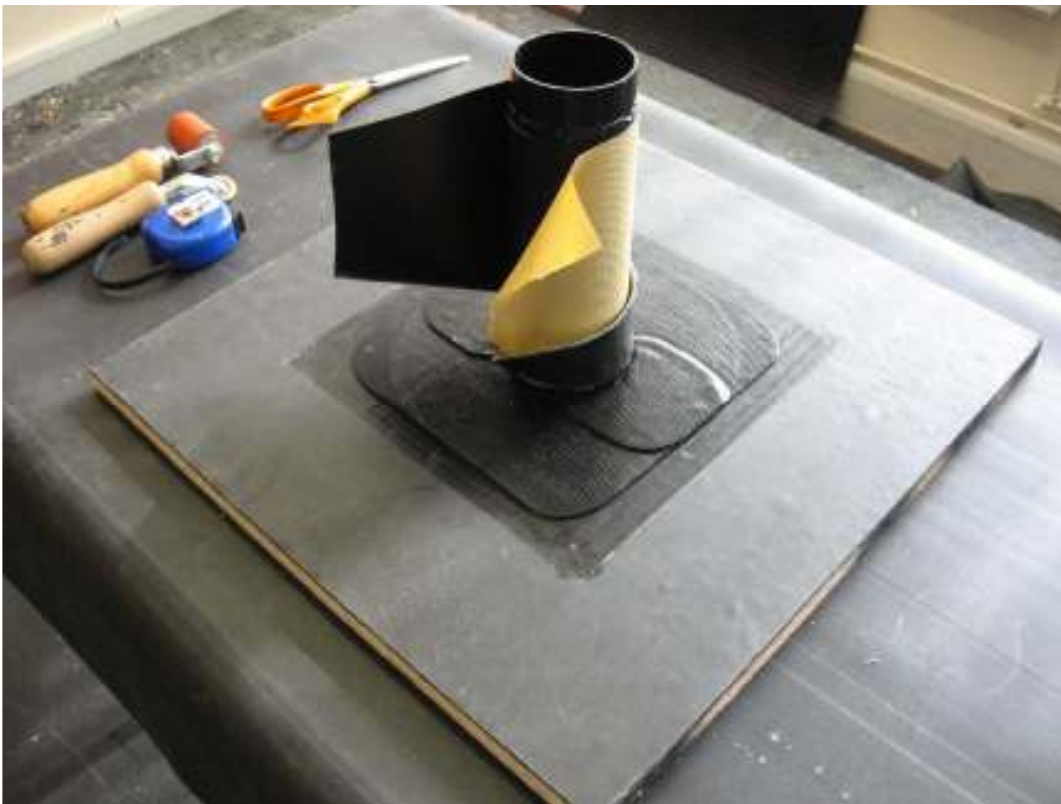
Prime the area where the flashing is to be mated.



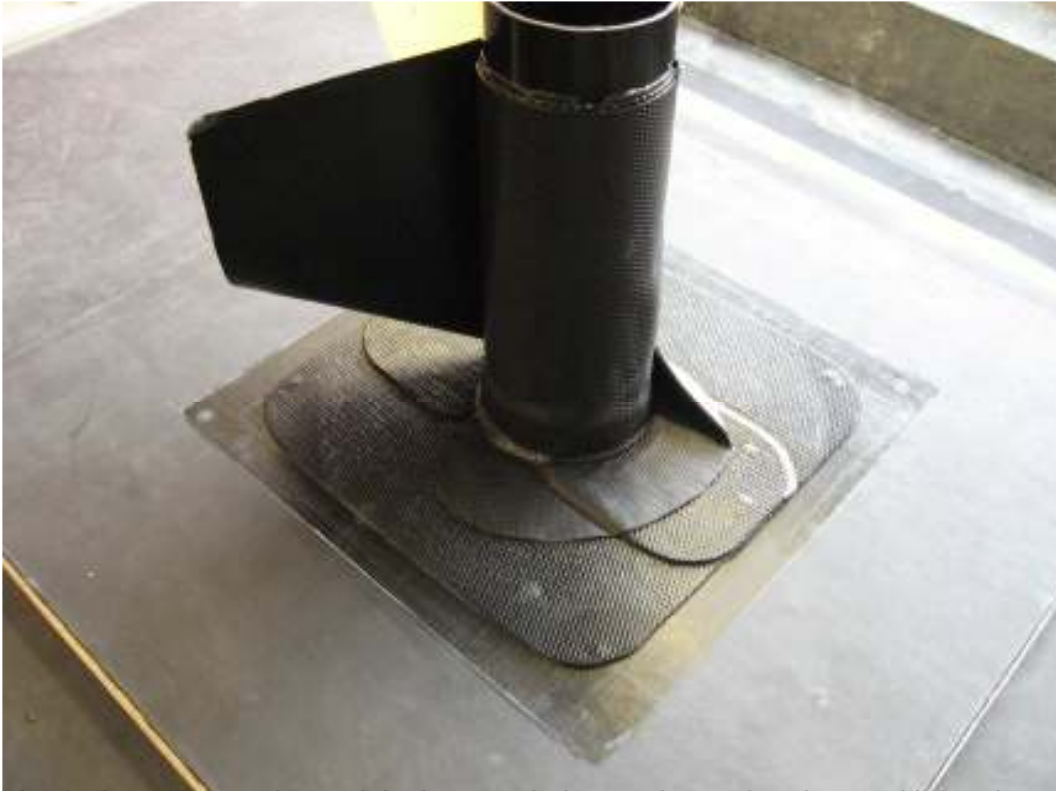
Apply the formflash and wrap around the pipe as shown below:-



With the yellow plastic backing still attached, “roll” the formflash down the pipe towards the base, then peel the first few inches of the plastic backing away.



Primer needs to be applied where the overlap will attach, so start to lay the formflash onto the deck, but only enough for the primer to be applied.



Apply the primer and once it is dry, attach the overlap to the pipe, and bring the rest of the flashing onto the deck. Use the rollers as normal.



The finished detail.



---